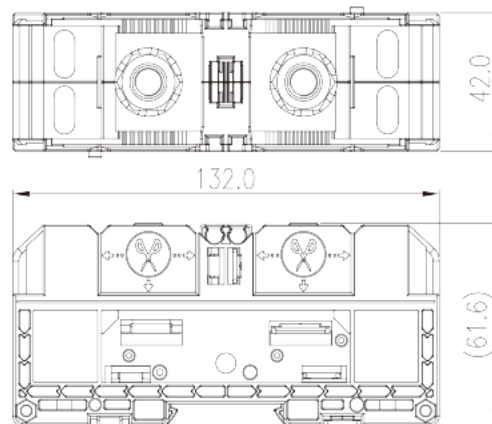
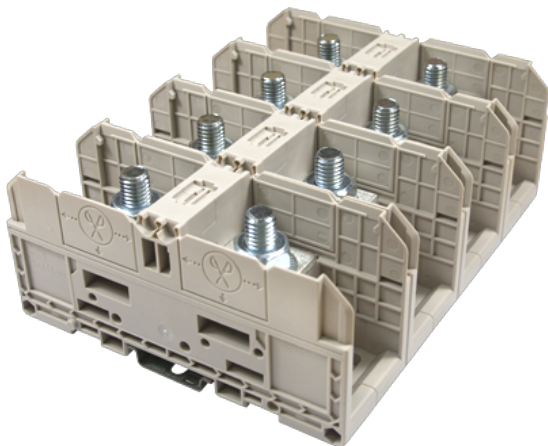


# DKM150

DIN Rail Terminal Blocks > Stud Connection

Date:2024-12-06



The web catalog is for reference only. Dinkle remains the right of product modification and engineering change of the design. The final product is made according to engineering drawing.

## Product Description

M10, 1500V, 350A, Beige (default)

## General information

Short description	Panel Mounting DIN Rail terminal blocks, Stud Connection
Category	Feed-through Single Level
Pitch (mm)	42
Color	Refer to drawing
Connection method	Stud Connection
Type of locking	Panel Mounting/Rail Mounting
Length (mm)	132
Width (mm)	42
Height (mm)	61.6
Level	Single level
Connection points	2

## Material information

Insulation material	PA
Insulation material group	I

Flame retardant rating , compliant with UL94	V0
Insulation resistance	□500MΩ at DC 500V

## Connection data-IEC

Rated voltage (V)	1500
Rated current (A)	309
Rated voltage (III/3)(V)	1500
Rated impulse voltage (III/3)(KV)	8
Conductor cross section solid. min (mm <sup>2</sup> )	10
Conductor cross section solid.max (mm <sup>2</sup> )	150
Conductor cross section stranded. min (mm <sup>2</sup> )	10
Conductor cross section stranded. max (mm <sup>2</sup> )	150
Screw thread	M10
Rated torque (N.m)	10~20
Recommend tightening torque. min (N.m)	10
Recommend tightening torque. max (N.m)	20
Stripping Length (mm)	The stripping length depends on the specification provided by the cablelug manufacturer
Mounting rail	TS-35
End cover plate required	NO
Grounding connections	NO

## Connection data-UL

Rated voltage (UL/CUL Group E)(V)	1500
Rated current (UL/CUL Group E)(A)	*Single Cable 285A / Double Cable 350A
Min. solid wire connection (AWG) acc. to UL/CUL	10
Max. solid wire connection AWG acc. to UL/CUL	300(kcmil)
Min. stranded wire connection AWG acc. to UL/CUL	10
Max. stranded wire connection AWG acc. to UL/CUL	300(kcmil)

## Environment & Safety

Back of the hand protection (YES or NO)	NO
Finger protection (YES or NO)	NO
Operating temperature. max (°C)	120
Operating temperature. min (°C)	-40

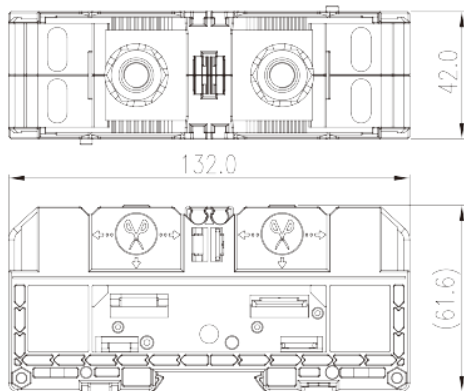
## UL Recognized

Wire Range (Group E)(AWG)	10~300(kcmil)
Rated voltage (Group E)(V)	1500
Rated current (Group E)(A)	*Single Cable 285A / Double Cable 350A

## CUL Recognized

Wire Range (Group E)(AWG)	10~300(kcmil)
Rated voltage (Group E)(V)	1500
Rated current (Group E)(A)	*Single Cable 285A / Double Cable 350A

## Drawings



## Approvals

