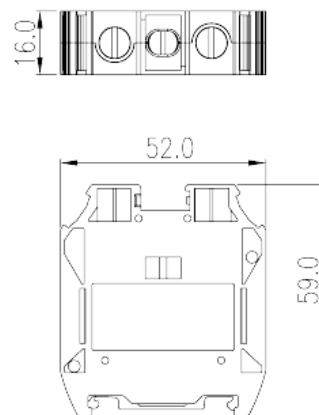
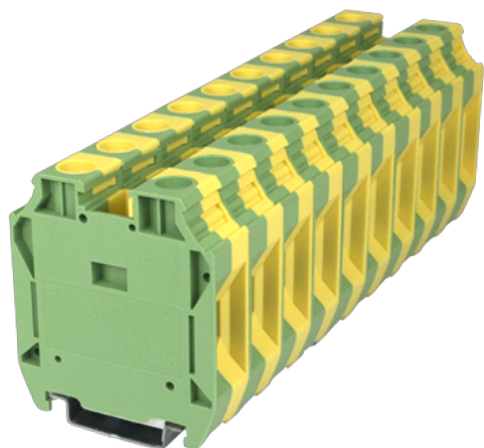


DK35H-PE

DIN Rail Terminal Blocks > Screw Connection

Date:2024-12-05Version:1.2



The web catalog is for reference only. Dinkle remains the right of product modification and engineering change of the design. The final product is made according to engineering drawing.

Product Description

M6, 600V, Yellow-Green (default)

General information

Short description	Grounding Terminal Block, Screw Connection
Category	Grounding Terminal Block
Pitch (mm)	16
Color	Yellow-Green (default)
Connection method	Screw Connection
Type of locking	Rail mounting
Length (mm)	52
Width (mm)	16
Height (mm)	59
Number of positions	□1P
Level	Single level
Connection points	2

Material information

Insulation material	PA
Insulation material group	I

Flame retardant rating , compliant with UL94	V0
Insulation resistance	□500MΩ at DC 500V

Connection data-IEC

Rated voltage (V)	1000
Rated voltage (III/3)(V)	1000
Rated impulse voltage (II/2)(KV)	8
Rated impulse voltage (III/2)(KV)	8
Rated impulse voltage (III/3)(KV)	8
Conductor cross section solid. min (mm ²)	2.5
Conductor cross section solid.max (mm ²)	50 (for copper rail) 35 (for steel rail)
Conductor cross section stranded. min (mm ²)	2.5
Conductor cross section stranded. max (mm ²)	35 (for copper rail) 25 (for steel rail)
Conductor cross section flexible, with min ferrule without plastic sleeve (mm ²)	2.5
Conductor cross section flexible, with max ferrule without plastic sleeve (mm ²)	35 (for copper rail) 25 (for steel rail)
Conductor cross section flexible, with min ferrule with plastic sleeve (mm ²)	2.5
Conductor cross section flexible, with max ferrule with plastic sleeve (mm ²)	35 (for copper rail) 25 (for steel rail)
2 conductors with same cross section, solid, min (mm ²)	2.5
2 conductors with same cross section, solid, max (mm ²)	10
2 conductors with same cross section, stranded, min (mm ²)	2.5
2 conductors with same cross section, stranded, max (mm ²)	10
2 conductors with same cross section flexible, with min ferrule without plastic sleeve (mm ²)	2.5
2 conductors with same cross section flexible, with max ferrule without plastic sleeve (mm ²)	10
2 conductors with same cross section flexible, min twin ferrules with plastic sleeve (mm ²)	2.5
2 conductors with same cross section flexible, max twin ferrules with plastic sleeve (mm ²)	10
Screw thread	M6 (wire) M4 (rail)
Slotted screwdriver size (Blade thickness x Width)(mm)	1.0x5.5
Rated torque (N.m)	3.5 (wire) 1.2 (rail)
Stripping Length (mm)	16~18

Mounting rail	TS-35 TS-35/15
End cover plate required	NO
Grounding connections	YES

Connection data-UL

Rated voltage (UL/CUL Group B)(V)	600
Rated voltage (UL/CUL Group C)(V)	600
Rated voltage (UL/CUL Group D)(V)	600
Min. solid wire connection (AWG) acc. to UL/CUL	12
Max. solid wire connection AWG acc. to UL/CUL	1 (for copper rail) 2 (for steel rail)
Min. stranded wire connection AWG acc. to UL/CUL	12
Max. stranded wire connection AWG acc. to UL/CUL	1 (for copper rail) 2 (for steel rail)

Environment & Safety

Back of the hand protection (YES or NO)	YES
Finger protection (YES or NO)	YES
Operating temperature. max (°C)	120
Operating temperature. min (°C)	-40

UL Recognized

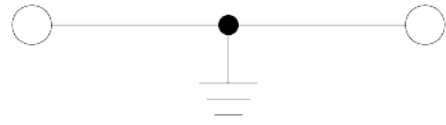
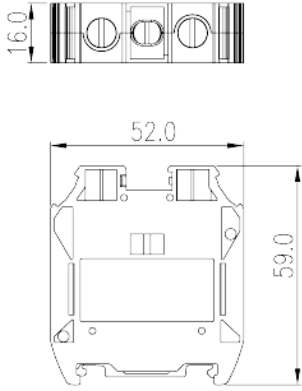
Wire Range (Group B)(AWG)	12~1 (for copper rail) 12~2 (for steel rail)
Rated voltage (Group B)(V)	600
Wire Range (Group C)(AWG)	12~1 (for copper rail) 12~2 (for steel rail)
Rated voltage (Group C)(V)	600

CUL Recognized

Wire Range (Group B)(AWG)	12~1 (for copper rail) 12~2 (for steel rail)
Rated voltage (Group B)(V)	600
Wire Range (Group C)(AWG)	12~1 (for copper rail) 12~2 (for steel rail)
Rated voltage (Group C)(V)	600

Drawings

--	--



Approvals

